

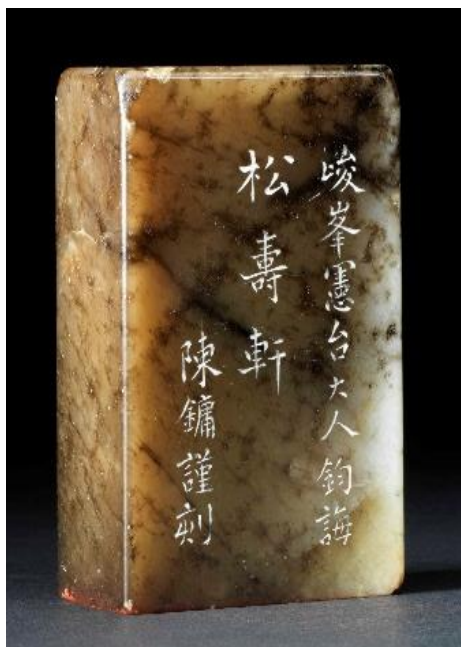
广东、入粤、居港、旅港印人
Seal carvers originated from, travelling to or living in Guangdong or Hong Kong

陈镛 (1769-?)

陈镛，江苏武进人。1769-?。字序东，号淥晴。他曾任广东县丞。师从毕涵，工摹浅绛山水，得其神韵；山水又学诸家，从王原祁、王翬得其神趣，广东人将陈璞、陈鼎与陈镛合称「三陈」。有《芦墅采菱图》等作品传世。

CHEN Yong (1769-?)

Chen Yong (1769-?), a native of Wujin, Jiangsu, courtesy name Xudong, literary name Luqing, worked as Assistant District Magistrate in Guangdong. He first learned landscape painting from Bi Han, and painted in the styles of Wang Yuanqi and Wang Hui. Owing to his artistic talent, he and the painters Chen Pu and Chen Ding were mentioned in one breath as the Three Chens in Guangdong. His paintings include *Water Chestnut Picking in Lushu*.



C1994.0574

平头钮长方形三字朱文印

Rectangular Seal with Three Characters Carved
in Relief

清乾隆至咸丰

Qing Qianlong to Xianfeng

陈镛

CHEN Yong

石 (青田)

Stone (Qingtian)

印文： 松寿轩

Seal characters: Songshou xuan

尺寸： 纵：3.6 厘米
横：3.7 厘米
高：4.9 厘米

Size: W: 3.6 cm
L: 3.7 cm
H: 4.9 cm